



Arch Re’s Facultative Reinsurance division focuses on supplying significant capacity to the global reinsurance marketplace backed by creative solutions and superior client service.

“Arch Re is an integral part of our business and we appreciate their capacity, knowledge and dedication to working through each risk. Working with Arch Re makes my job easier.”

– North American Customer Engagement Survey 2023

## OUR ADVANTAGE



Individual Risk and Hybrid Solutions



Technical Expertise and Knowledge



24-Hour Acknowledgment



Customized Structures

## OUR APPETITE

### Supplying meaningful capacity with a consistent risk appetite in the Individual Risk marketplace.

#### Property Excess of Loss Capacity

- \$65M Individual Risk.
- \$30M Hybrid Facilities.
- All Risk and Standalone Perils (including standalone CAT perils).
- Standard and E&S, Small to Large Market accounts.
- Spot Facultative and Blanket.

#### Wide Range of Occupancies

(including but not limited to)

- Agriculture
- Education Services
- Healthcare
- Light to Heavy Manufacturing
  - Chemical
  - Food and Beverage
  - Metal
  - Plastic

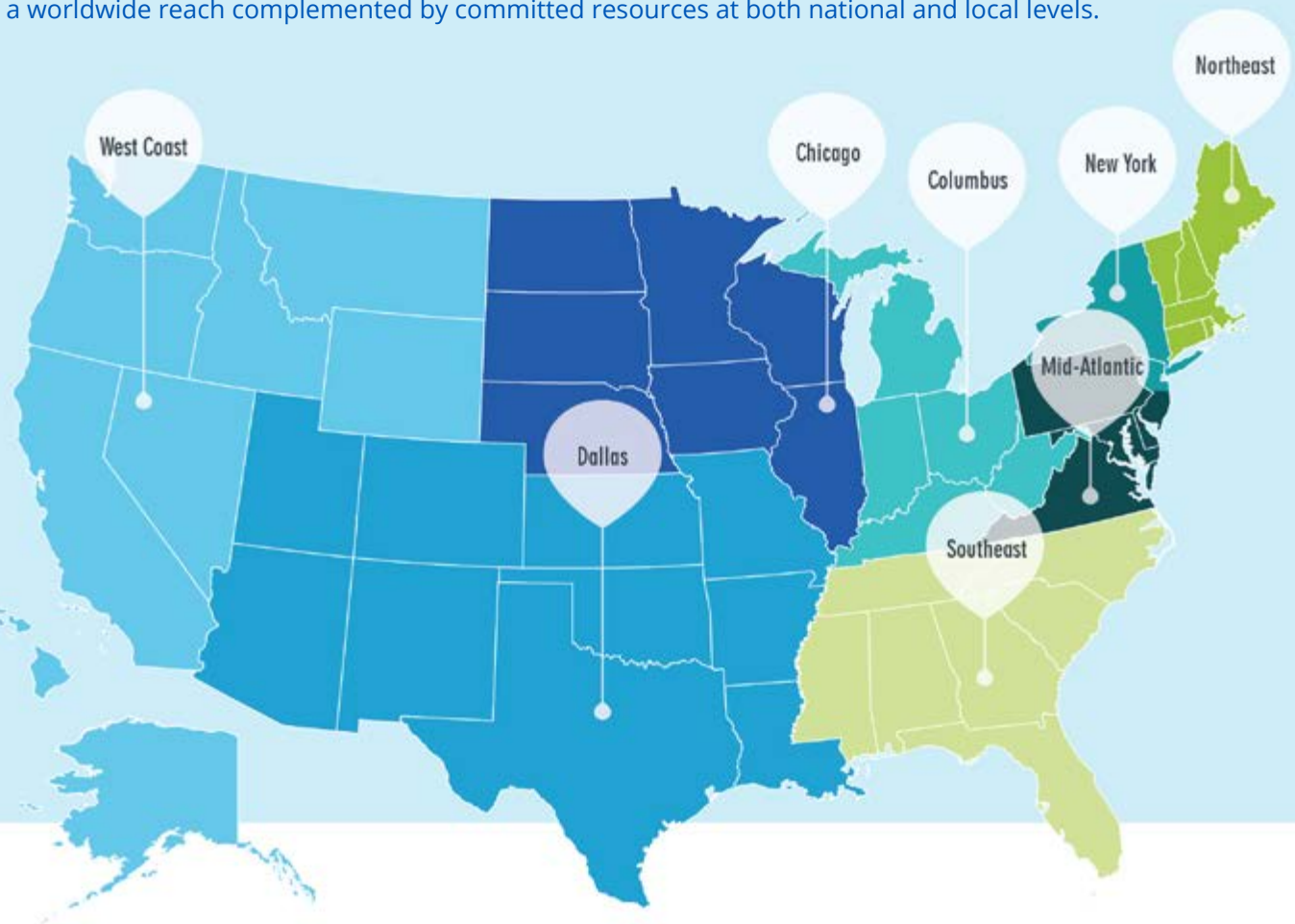
- Municipal Services
- Real Estate/Offices
- Residential/Lodging
- Retail
- Warehousing
- Wood Products

#### Miscellaneous Others

- Inland Marine
- Vacant and Distressed
- International Locations

## GLOBAL PRESENCE | LOCAL PROFESSIONALS

With a presence in **17 offices** and a team of over **100 property professionals** across the globe, we offer a worldwide reach complemented by committed resources at both national and local levels.



### Chicago

Jim Goodwin  
[jgoodwin@archre.com](mailto:jgoodwin@archre.com)

### Columbus

Sean Donnelly  
[sdonnelly@archre.com](mailto:sdonnelly@archre.com)

### Dallas

Brian Purvis  
[bpurvis@archre.com](mailto:bpurvis@archre.com)

### Mid-Atlantic

Koory Esquibel  
[kesquibel@archrefac.com](mailto:kesquibel@archrefac.com)

### New York

Greg Parker  
[GParker@archre.com](mailto:GParker@archre.com)

### Northeast

Megan McCarthy  
[mmccarthy@archre.com](mailto:mmccarthy@archre.com)

### Southeast

Megan Everett-Hoffman  
[mhoffman@archre.com](mailto:mhoffman@archre.com)

### West Coast

Justin Griffith  
[jgriffith@archre.com](mailto:jgriffith@archre.com)



### ASK US ABOUT ARCHWAY:

Our web-based platform to submit, bind, endorse and renew risks!



[archre.com](http://archre.com)